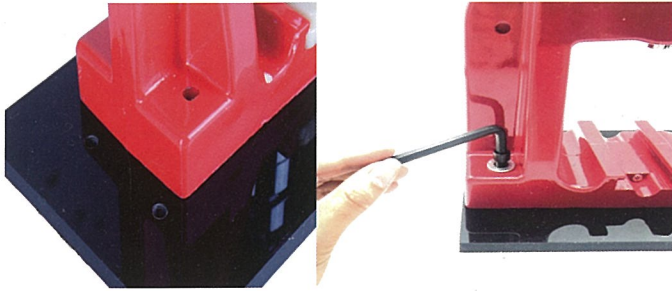


## ASSEMBLY



Step 1: use  $\phi 6$  Allen key to screw body and base plate with a bolt and a washer.



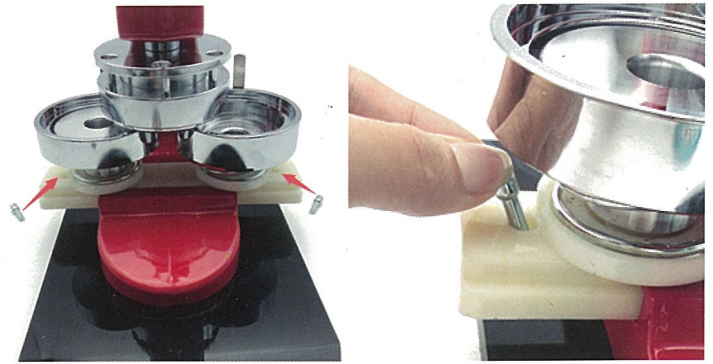
Step 2: check the mold, make sure two baffles on the middle position. If the baffles is shifting, rotating the mold to the middle position and use  $\phi 8$  Allen key to fasten it.



Step 3: set into upper mold. Align the bump with the groove.



Step 4: hold up the upper mold, make sure there is no gap in the upper mold. Then sliding mold slide to the body groove.



Step 5: put two nails in holes to secure the mold.



Step 6: screw handle to the body. Press the handle without badge material, make sure the mold is in the correct place.

## Tips



When working long hours, maybe there make some waste, pls rub lubricating oil to the mold in red circle.

## Paper Cutter

